

ESTAFLOOR 1000

EPOXY SELF LEVELING

PRODUCT DESCRIPTION

A two part epoxy compound for use in flooring applications. It has been specially formulated to provide seamless, truly level floor surfaces with excellent chemical and abrasion resistance. It can be successfully applied to dry or damp surfaces, but NOT where there is standing water. Due to its self-leveling properties it is good at hiding surface imperfections.

SPECIAL PROPERTIES

- * finds own level on floor - hides surface imperfections
- * Chemical abrasion resistant
- * Solvent free - aids ventilation requirements during application
- * Can be applied to damp surfaces
- * Approved for use in the Nuclear industry - accepted for inclusion in AECP 1002
- * The coating of surfaces for use in the Nuclear industry.



PHYSICAL DATA

POT	60 Minutes At 20°C
LIGHT TRAFFIC	24 hours at 20°C
FULL CURE	7 days
S.G.	1.35
COLOURS	A limited range of colours available on request
SHELF LIFE	12 months in unopened containers
STORAGE	In a cool, dry place
CLEANING	2-2.5 m ² per kit gives approx. 2 mm
NON - FLAMMABLE	Flash point, Part A above 55 °C (131°F) Part B 100°C (212°F)
CASE OF CONTAMINATION	(BS2427 Part Test A): Fair (factor - 27) included in AECP 1002.
BACK SIZE	6.75 kg kit, in two parts, A and B

APPLICATION DETAILS

After thorough mixing, Estafloor 1000 should be applied by trowel float or special roller at a rate of 2-2 ½ m² per kit. This gives an approximate thickness of 2 mm, but a higher thickness may be applied if the surface profile requires it, to a maximum of 4-5 mm. Do not apply at temperatures below 5°C

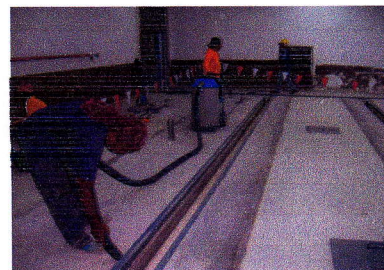
ESTAFLOOR 1000

EPOXY SELF LEVELING

CHEMICAL RESISTANCE

Resistance to the following substances is extremely good, but in all cases of chemical spillage it is essential that the chemicals be removed as quickly as possible and the surface washed down with water.

Brine	Caustic Soda	Sodium Hypochloride
Detergent	Mineral Oil	Sodium Sulphate
Alcohol	Vegetable Oil	Sulphuric Acid
Sugars	Hydraulic Oil	Phosphoric Acid
White Spirit	Patrol	Hydrochloric Acid
Soda	Lactic Acid	Nitric Acid
Fruit Juices	Acetic Acid	



SURFACE PREPARATION

SITE WORK

- * Surfaces should be dry, sound and free from all foreign matter such as dust, dirt, grease, release - agents, silicone treatment, efflorescence, laitance, loose & flaking material. All high spots such as builders debris & detritus should be removed.
- * Any damaged areas should be made good with ESTAFLOOR 1000. The sub-floor must also be provided with a damp-proof membrane in accordance with Code of Practice 102:1972.
- * Green concrete should not be coated: new concrete floors should be left for a minimum of 28 days before coating.
- * Hand - floated or well worn concrete requires no further preparation, but all other concrete decks such as power-floated or very smooth areas should be prepared, preferably by closed-circuit grit blasting or scabbling to remove the top surface. Acid-etching (using Cementone Mortar Clean or similar) may be used to prepare such surfaces, but it is not recommended as it is very difficult process o control. A surface sheen, or laitance may also be removed by wet or drying grinding.
- * Compatibility with previous paint systems should always be tested first if their removal by sanding or grinding is impractical. Advice on over coating surfaces which are sensitive is available from the Technical Dept. Previously painted surface should be thoroughly abraded by sanding or wire brushing (scarifying machine) to improve adhesion and to remove any weak or loose material.
- * On metal surfaces, remove any loose or flaking material and rust by wire brushing or disc grinding. Shot or grit-blasting (to BS4232 second quality) is an ideal preparation. Oil or grease should be removed with Cempodegrease and the metal the washed with Cementone Beaver Cleaning solvert and allowed to dry. Coating should be carried out immediately after cleaning.

ESTAFLOOR 1000

EPOXY SELF LEVELING

PRIMING

- * Concrete and associated surfaces which have been prepared by abrasive methods (i.e. scabbling, grit blasting) should be primed with PRIMFLOOR AS (allowing 3-4 hours for cure before overcoating).
- * Metal surfaces do not normally need priming, unless exceptional adhesion is required, in which case the substrate should be treated with Etch Primer at a coverage of 10m²/litre and allowed 3-4 hours to cure.
- * All other surfaces, such as timber, hand-floated concrete, may be coated without the use of a priming coat unless they are of high porosity, in which case they should be primed in the same manner as abrasive cleaned concrete.
- * All other surfaces, such as timber, hand-floated concrete, may be coated without the use of a priming coat unless they are of high porosity, in which case they should be primed in the same manner as abrasive cleaned concrete.
- * Complete contents of Part B are poured into Part A and thoroughly mixed together with a flat bladed paddle in a slow drill until completely dispersed. Care should be taken to incorporate air into the mix. Incomplete mixing will be characterized by erratic or partially incomplete curing of the material even after extended time periods.

HEALTH AND SAFETY

- * ESTAFLOOR 1000 Part B, and thus (to a lesser extent) the uncured mix, is corrosive and may cause sensitization by inhalation or skin contact.
- * Avoid inhalation of vapour / mist and skin or eye contact. Good ventilation during mixing, application and curing should be ensured. Coveralls and impermeable gloves and boots must be worn; and the use of suitable eye protectors is essential if there is a eating, drinking, smoking or using the toilet.
- * ESTAFLOOR 1000 is non-flammable (See Product Data) but will burn if ignited and may generate noxious or toxic fumes.

This data sheet should be read in conjunction with "Safety in the use of Specialist Products" our general safety information sheet.

FIRST AID

- * **Eyes:** In the event of accidental splashes, flush eyes with warm water immediately and obtain medical advice.
- * **Skin:** Wash skin thoroughly with soap and water or approved industrial cleaner. **DO NOT USE** solvent or thinners.
- * **Inhalation:** Remove to fresh air, loosen collar and keep patient rested.
- * **Ingestion:** In case of accidental ingestion, **DO NOT INDUCE VOMITING.** Obtain immediate medical attention.
- * **Spillage:** Ventilate area. Collect spillage with an inert absorbent, such as sand or earth. Dispose in accordance with local authority regulations.

